

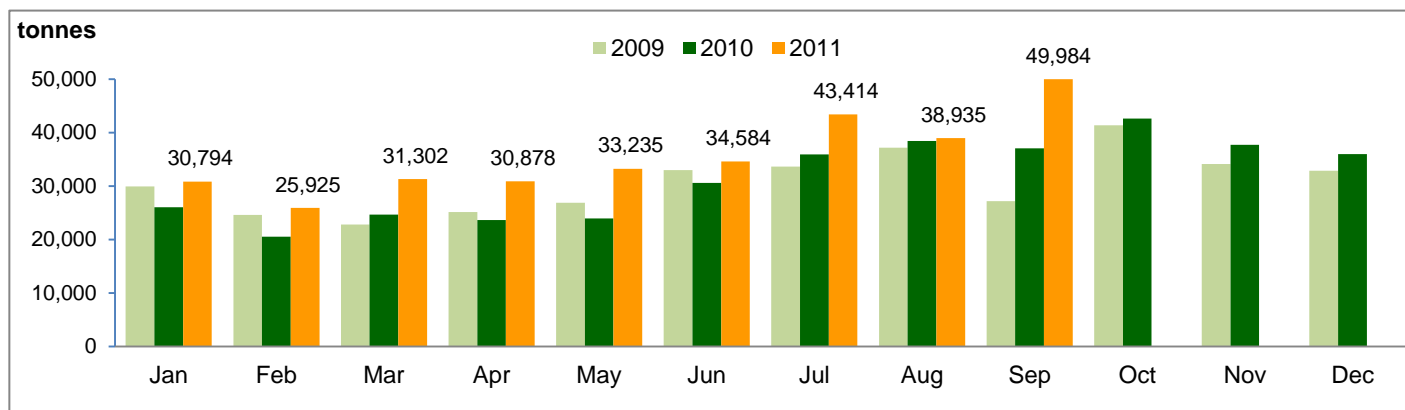


Monthly Production Highlights – September 2011

Production and Yields

		9M2011	9M2010	Change	Sept 2011	Sept 2010	Change
Production							
FFB Total	(tonnes)	1,342,949	1,100,304	22.1%	210,245	157,110	33.8%
Nucleus		1,222,249	1,005,322	21.6%	192,001	141,861	35.3%
Plasma		120,700	94,982	27.1%	18,244	15,249	19.6%
CPO	(tonnes)	319,051	260,634	22.4%	49,984	37,018	35.0%
PK	(tonnes)	73,067	58,713	24.4%	11,636	8,471	37.4%
Efficiency							
FFB Yield	(tonnes/ha)	15.7	14.0	↑	2.5	2.0	↑
CPO Yield	(tonnes/ha)	3.7	3.3	↑	0.6	0.5	↑
CPO Extraction Rate	(%)	23.5	23.5	-	23.7	23.2	↑
PK Extraction Rate	(%)	5.4	5.3	↑	5.5	5.3	↑

CPO Production Trend



	Jan	Feb	Mar	Apr	May	Jun	Jul	Aug	Sep	Oct	Nov	Dec
2010	26,004	20,503	24,625	23,634	23,941	30,587	35,925	38,398	37,018	42,630	37,705	35,953
2009	29,920	24,579	22,786	25,127	26,861	32,990	33,645	37,185	27,193	41,367	34,106	32,874

Notes:

Figures may not sum due to rounding

FFB: Fresh Fruit Bunches

CPO: Crude Palm Oil

PK: Palm Kernel

Nucleus: Plantations owned by the Group

Plasma: Plantations developed by the Group for the benefit of smallholders. The Group buys FFB from these plasma plantations at prices determined by the Indonesian government.

Yields: FFB Yield and CPO Yield are for the reported period and not annualised